



Commercial HEAVY 430

Architectural Shade Fabric

OUTDOOR RECREATION AREAS

CAR PARK STRUCTURES

SPORTING VENUES

GALE
P A C I F I C

Commercial

HEAVY 430

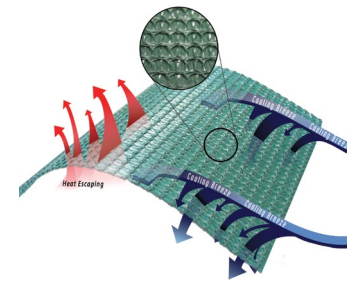
Architectural Shade Fabric



Commercial Heavy 430 is the newest addition to GALE Pacific's Architectural shade fabric range. It was engineered specifically to withstand extreme weather conditions on large scale tension structures. It features superior biaxial strength and load bearing performance for optimum shape and tensioning endurance.

Made from 100% round monofilament and designed using a patent pending intertwining knit pattern.

Commercial Heavy 430 offers up to 94% UV protection and is available in 13 popular colors, making it easier than ever to complement existing design elements and color schemes.



Applications

- Large tension structures
- Large awnings
- Car Park structures

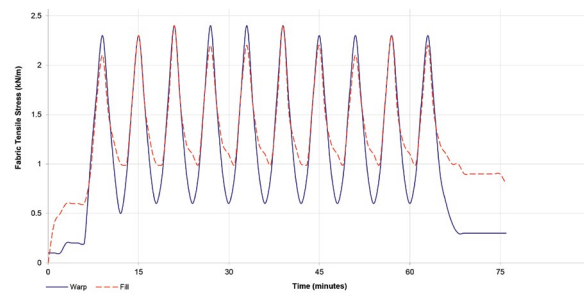
Usage Instructions

Do not use near flames.

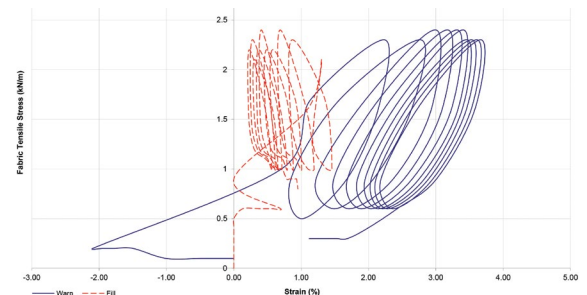
Contact with organic solvents, halogens or highly acidic substances may reduce the service life of the fabric and void the warranty.

Features	Benefits
Provides UV block up to 94%	Reduces sun exposure
Full 15 year warranty against UV degradation	Peace of mind
Made from strong HDPE 100% recyclable fabric	Won't rot or absorb moisture
Stentered (heat-set)	Virtually eliminates any possibility of shrinking once installed and provides ease of fabrication
100% Lead and Phthalate free	Healthier environment
Greenguard® and Oeko-Tex® certified	Confidence in operational quality assurance
Engineered in Australia	Meets harsh environmental conditions

Load Diagram



Biaxial Stretch Test





Physical Properties	Test Method	Imperial	Metric
Fabric Weight	ASTM D-3776	13.0 (oz/yd ²)	430 +/-20 (g/m ²)
Approximate Thickness	ASTM D-5199	63 mils	1.6 mm
Tensile Strength	ASTM D-5034	Warp: 374.6 lbs. Weft: 397.1 lbs.	Warp: 2000 N/50mm Weft: 1700 N/50mm
Bursting Strength	ASTM D-3787	450.3 lbs.	2130 N
Elongation	ASTM D-5034	Warp: 110.7% Weft: 125.8%	Warp: 110.7% Weft: 125.8%

Material		
Yarn	Knitted UV-stabilized HDPE	
Construction	100% Monofilament	
Pattern	Lock-stitch knitted	
Temperature range	Imperial	Metric
	-22°F to 167°F	-30°C to +75°C

Color	Code	Nom Width*	Length**	Cover Factor	Shade Factor	Av % Trans	Av% UVR Trans	Av PAR Trans	%UVR Block	PF
Aquatic Blue	484323	3m	40m	91.2	89.7	10.3	8.9	11.0	91.1	11.6
Black	484422	3m	40m	94.3	94.3	5.7	5.7	5.7	94.3	17.6
Brunswick Green	484361	3m	40m	92.5	92.4	7.6	7.6	7.5	92.4	13.5
Charcoal	484460	3m	40m	90.4	90.4	9.6	9.6	9.6	90.4	10.7
Deep Ochre	484385	3m	40m	94.9	94.6	5.4	5.1	5.3	94.9	21.8
Desert Sand	484309	3m	40m	93.0	87.1	12.9	7.1	13.4	92.9	14.7
Emerald	485887	3m	40m	90.3	88.8	11.2	9.8	11.0	90.2	10.3
Natural	484347	3m	40m	92.3	79.1	20.9	7.9	23.2	92.1	14.4
Navy	484446	3m	40m	90.8	90.3	9.7	9.3	9.9	90.7	10.9
Red	484484	3m	40m	91.4	80.8	19.2	8.7	17.3	91.3	11.5
Steel Grey	484408	3m	40m	90.1	89.2	10.8	9.9	10.9	90.1	10.3
White	485863 [^]	3m	40m	90.6	72.9	27.1	9.7	31.2	90.3	10.6
Yellow	485849	3m	40m	91.2	76.3	23.7	8.8	24.9	91.2	11.8

[^] Available in made to order only, contact your GALE Pacific representative for lead time information

*Folded. **Roll.

The above results are typical averages from independent testing and quality assurance testing and are not to be taken as a minimum specification nor as forming any contract between GALE Pacific and another party. Due to continuous product improvement product specifications are subject to alteration without notice.

As the use and disposal of this product are beyond GALE Pacific's control, regardless of any assistance provided without charge, GALE Pacific assumes no obligation or liability for the suitability of its products in any specific end use application. It is the customer's responsibility to determine whether GALE Pacific's products are appropriate for the specific application and complies with any legal & patent regulations.

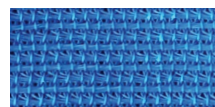
The calculated protection factor is for the material only and does not account for the effect of indirect UVR when situated at a distance from the persons being protected.

Lead & Phthalate Tests*	Result
CPSIA Section 101 (a)(2) Lead not detected	PASS
CPSIA Section 108 Lead not detected	PASS

Flammability Tests*	Results
AS1530.2 Flammability Index (range 0-100)	34
ASTM E-84	Class A

Specification	Imperial	Metric
Width**	9 ft 10 in	3 m
Length	131 ft	40 m
Roll Weight (approx.)	119 lbs	54 kg
Roll Diameter (approx.)	12 in	0.30 m
Core Diameter (approx.)	1.38 in	35 mm

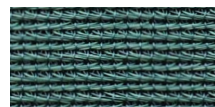
Colors Available



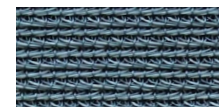
Aquatic Blue 484323
91.1% UVR Block



Black 484422
94.3% UVR Block



Brunswick Green 484361
92.4% UVR Block



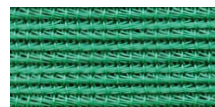
Charcoal 484460
90.4% UVR Block



Deep Ochre 484385
94.9% UVR Block



Desert Sand 484309
92.9% UVR Block



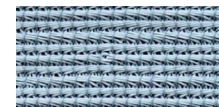
Emerald 485887
90.2% UVR Block



Natural 484347
92.1% UVR Block



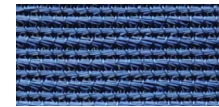
Red 484484
91.3% UVR Block



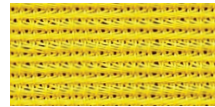
Steel Grey 484408
90.1% UVR Block



White 485863[^]
90.3% UVR Block



Navy Blue 484446
90.7% UVR Block



Yellow 485849
91.2% UVR Block

[^] Available in made to order only, contact your GALE Pacific representative for lead time information

Please note, due to the limitations of the printing process, colors may not represent the true color

**Commercial HEAVY 430 is
OEKO-TEX® Standard 100 and
Greenguard children and school
certified.**

As the demand for healthy, sustainable products continues to expand, consumers and building industry professionals increasingly demand substantiation of product sustainability claims and rely on trustworthy third-party certifiers to guide purchasing and specification decisions. GREENGUARD & Oeko-Tex Standard 100 Certification provides the market with solutions and resources to ensure healthier environments, and provides manufacturers with credible tools to legitimize and promote their sustainability.

**The GREENGUARD and Oeko-Tex
Standard 100 Certifications set stringent
limits for products to achieve in several
key areas such as:**

- Limiting Volatile Organic Compound (VOC) content
- Lowering formaldehyde emissions
- Lowering lead and phthalate content

AU P 1800 331 521 F +61 3 9518 3398 gpcommercial.com
NZ P 0800 555 171 F 0800 555 172
UAE P +971 4 881 7114 F +971 4 881 7167
USA P 1800 560 4667 F +1 407 772 0553 gpcommercialusa.com

